

ITEM NO. 7a Supp

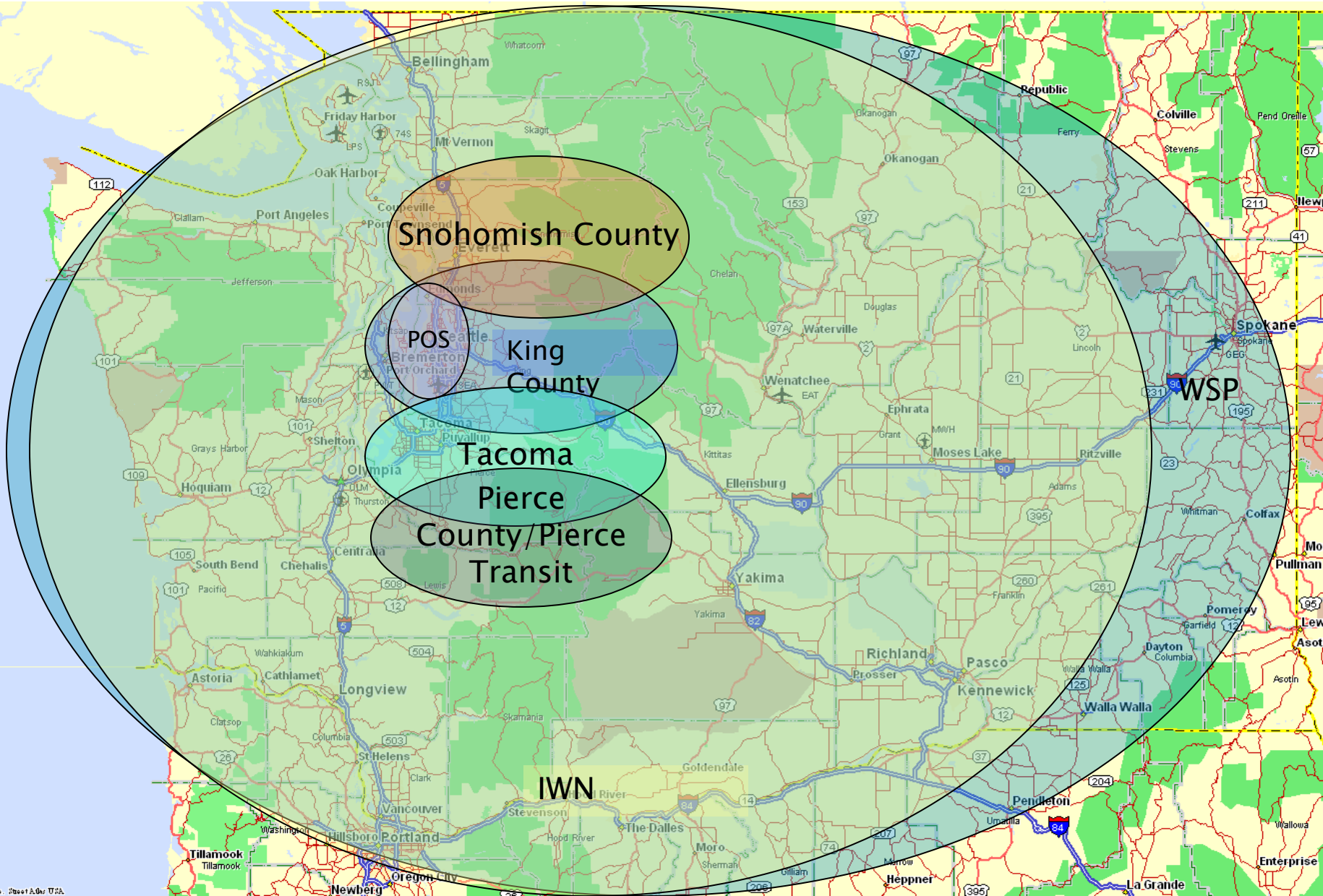
DATE OF  
MEETING October 9, 2012

# Port Emergency Radio System

## Briefing to the Port of Seattle Commission

### October 9, 2012

# Key Systems



# Radio System Core

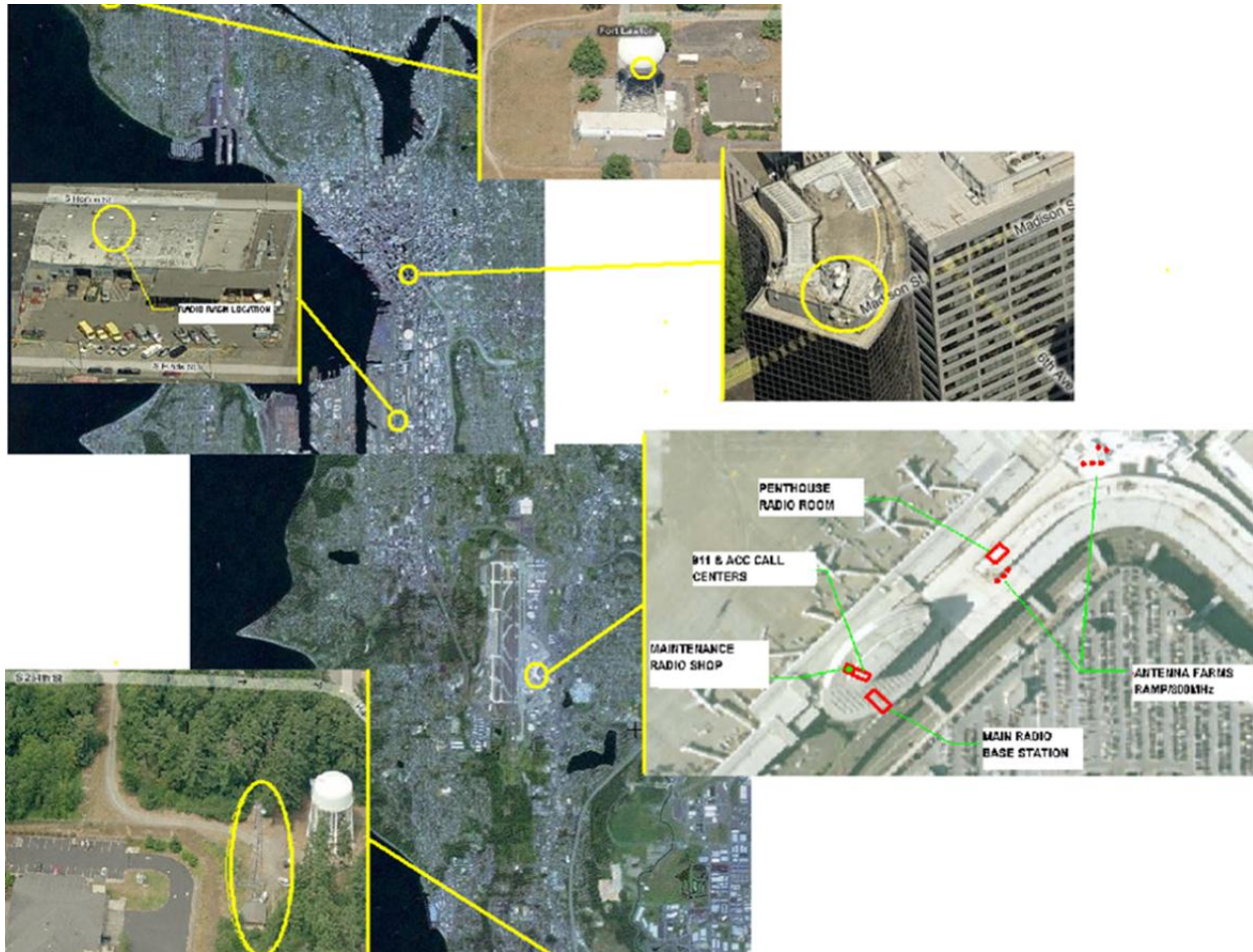


P25 RADIO SYSTEM CORE





# POS Radio Tower Locations



# 911 Radio Console Stations





# Fire



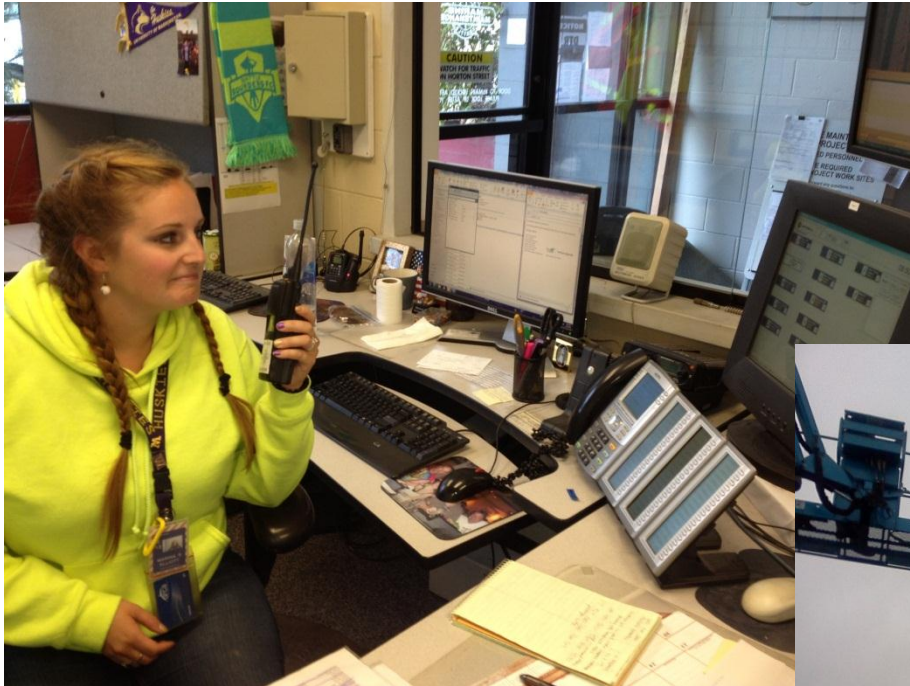


# Police





# Marine Maintenance





# Airport Maintenance and Airfield Operations



# Objective:

Ensure continued full reliability (100% “up-time”) for both daily and emergency Portwide operations even if other partners’ radio systems have outages.



# Questions – Shared Radio Systems

- ▶ Are there longer-term consequences and costs that cannot be foreseen now?
- ▶ Are there shorter-term operational complexities and costs in sharing radio facility elements now?

# Next Steps:

## Partner with King County Staff

- ▶ Possible alternatives for closer cooperation and merging portions of systems
  - Develop scenarios that inform future policy decision
  - Assess Port mission capability
    - Radio coverage across Port facilities
    - Underground facilities: trains, tunnels
    - Airport federal linkages: FAA, TSA
    - Large scale regional emergencies
  - Identify near and long-term costs
    - Capital upgrades over time
    - Annual maintenance costs
    - Software changes